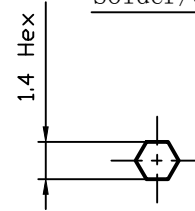
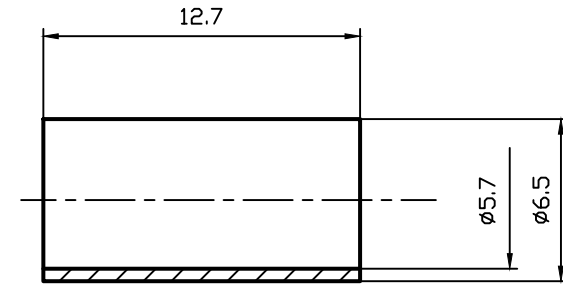
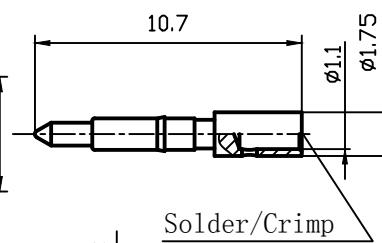
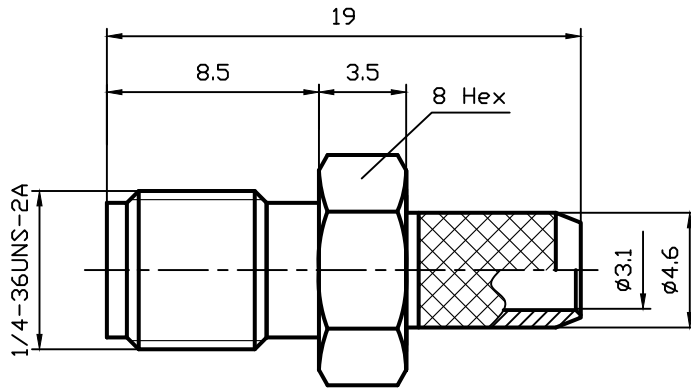
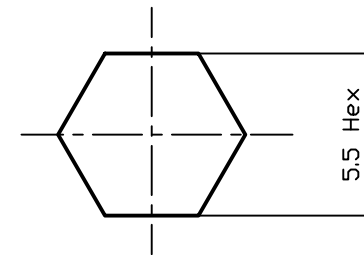


RevNo	Revision note	Date	Signature	Checked
V1.0	Sketch only	13/03/2024		

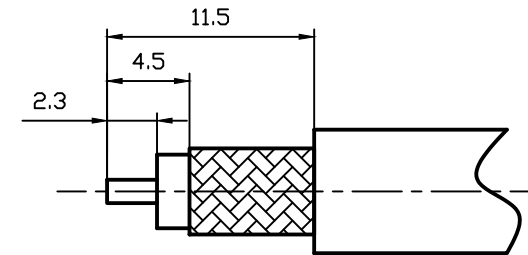
RoHS Compliant.



Recommended stamping hexagonal die size (Inserting pin)



Recommended stamping hexagonal die size (cannula)



Suggested stripping

Interface Per: MIL-STD-348, IEC 60169-15
Cable Type: RG58/RG223

Material & Finishing:

- Center conductor: Phosphor bronze, Gold Plating
- Insulators: PTFE
- Body : Brass, Nickel plated
- Crimping Ferrule: Soft Copper, Gold Plating

Electrical Data:

- Impedance: 50 Ohms
- Frequency: 0~6 GHz
- VSWR: ≤ 1.15 @ 900MHz ,
 ≤ 1.2 @ 1800MHz,
 ≤ 1.3 @ 3000MHz,
 ≤ 1.4 @ 6000MHz,
- Insertion lo : ≤ 0.05 dB @ 900MHz,
 ≤ 0.05 dB @ 1800MHz,
 ≤ 0.05 dB @ 3000MHz,
 ≤ 0.05 dB @ 6000MHz,
- Dielectric Withstanding voltage: 1000V Min
- Voltage Rating : 500V Max

Unless otherwise specified, tolerances as below: .x ±0.15 .xx ±0.1 .xxx ±0.05 Angle: ±2°	Material:	See Notes	Weight	g		
	Finish:	See Notes	Scale	8 : 1		
	Unit	mm	Page	01		
	REV.	V1.0	p/n	01	DWG NO.	3.01.283
Drawn		DATA:	Projection		Cust P/N.	TBD
Checked		DATA:	Title: RP-SMA JACK FOR RG58/RG223 CABLE			
Approved		DATA:				